

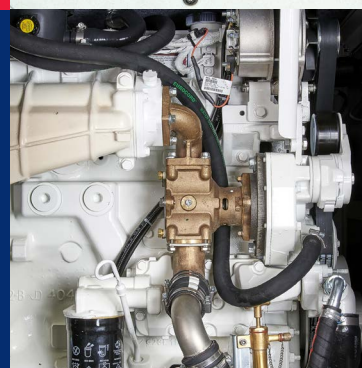
# VS 180 J-4P



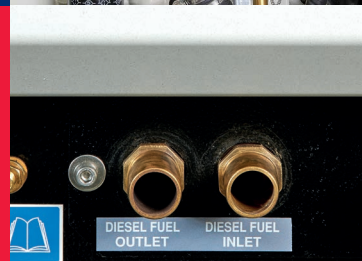
Control panel



Variable speed John Deere engine

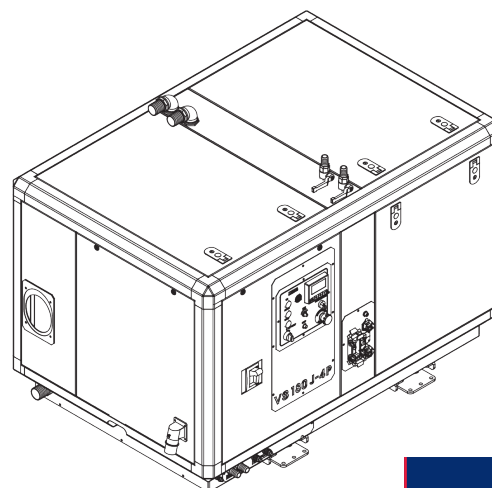
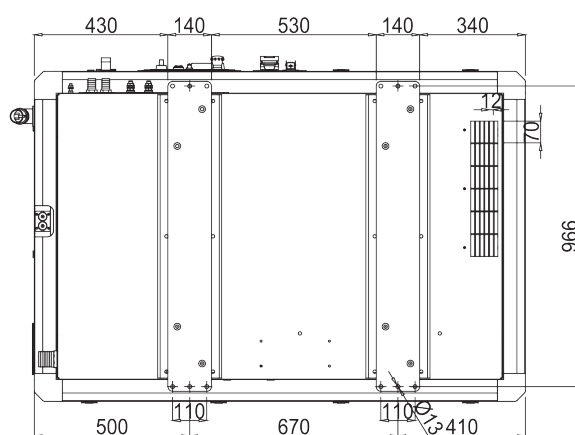
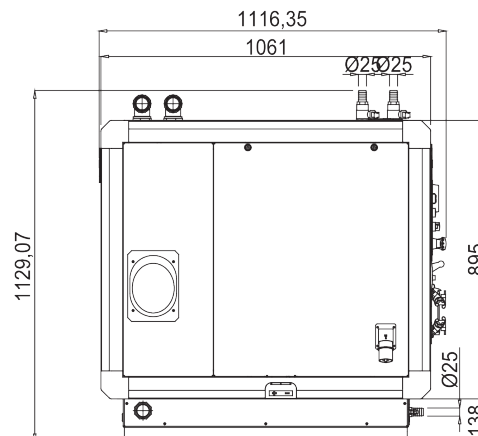
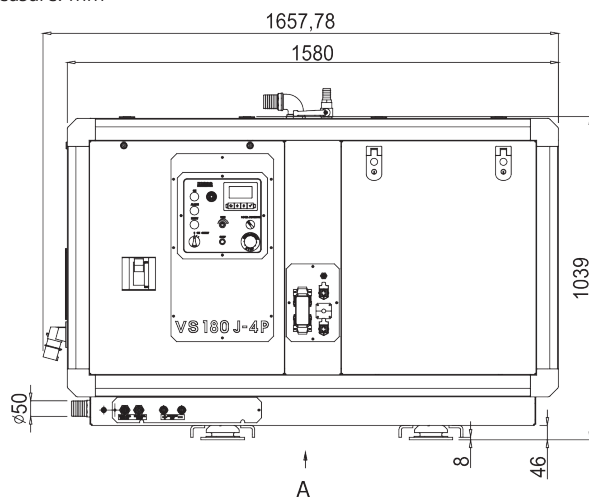


Input/Output fuel pipe



**variable speed**

Unit of measure: mm



Mase Generators spa

Via Tortona, 345 - 47522 - Cesena (FC) - Tel. +39 0547 354311

[www.masegenerators.com](http://www.masegenerators.com) - [commercial@masegenerators.com](mailto:commercial@masegenerators.com)

**mase**  
**GENERATORS**  
Believing in change.



## Description

- Marine power generator
- Variable speed Diesel engine (1000 – 2500 rpm)
- Silenced version

## Generator

- Type: Danfoss EM-PMI 375-T800 - Permanent magnet (PMG)
- Cooling: Water/Glycol
- Inverter DC Voltage (V): 640
- Estimate continuous power: 150 kW - 2500 rpm
- Torque: 735 Nm @ 325A
- Alternator degree of protection: IP65

## Starting batteries

- Type: AGM
- Voltage (V): 2 x 12
- Capacity (Ah): 100
- Starting current (A): 90

## Variable speed diesel engine 4 stroke

- Type: John Deere 4045SFM85 - 4 cyl. - 315 hp (234,8 kWm) - 4500 cm<sup>3</sup>
- Specific fuel consumption at 100% load: 62 lt/h
- Cylinder block material: Cast iron
- Bore (mm - in.): 107 - 4,21
- Stroke (mm - in.): 127 - 5,00
- Aspiration: Turbo
- Combustion system: Direct
- Engine head material: Cast iron
- Speed governor: Centrifugal mechanical
- Lubrication system: Forced
- Oil sump capacity (L - qt.): 19 - 20,1
- Engine stop system: Stop solenoid
- Fuel pump: Mechanic
- Fuel pump discharge (cm - in.): 100 - 39,4
- Starter (kW-V): 4 - 24
- Easy access in case of maintenance to the feeding system and lubrication of the sea/water pump and the air filter
- Safety stop in case of low oil pressure
- Safety stop in case of high water/exhaust gas temperature
- Oil and fuel filters of easy access
- Compact size
- High performance combined with low noise and low vibrations
- Electronically controlled common-rail fuel system
- Hi-tech injection system and high engine efficiency

## Standard Features

- The IntelliDrive BaseBox controller communicates with the electronic engine management system via CANbus using a standard J1939
- It monitors and protects the generator set during the operation
- Remote control/monitoring via Modbus RS485, Ethernet
- RS232, RS485, Ethernet communication
- support
- Speed/ load control via Modbus RS485
- 16 configurable digital inputs
- 16 digital outputs configurable with positive or negative common
- 4 analog inputs
- 2 analog outputs
- 2 analogue outputs (configurable speed regulation)

## Noise level

- 61 dBA @ 7mt

## Other features

- Dimensions (L x W x H): 1580 x 1061 x 1039 mm
- Dry weight: 1135 Kg
- Max. inclination: 30°
- Soundproof cabin made of extremely light marine aluminum with very high resistance to external agents. Low weight and easy accessibility to the inner cabin in case of maintenance services. Ecofibre soundproofing panels are applied inside the canopy, to maximize acoustic performance